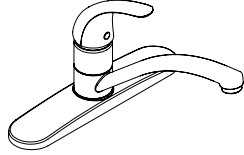




Design House is a registered brand of DHI Corp.  
Mequon, WI 53092  
1-800-558-8700

## SINGLE HANDLE KITCHEN FAUCET

Models 526996 526988 526970



Your new Design house faucet will give you years of trouble free performance. Thank you for choosing our product for your home. **Please read all of these instructions carefully before installing your new faucet.**

### Helpful tools to install this faucet:

- .basin wrench
- .silicon sealer
- .Teflon tape
- .flashlight
- .wrenches
- .faucet supply tubes

### IMPORTANT POINTS

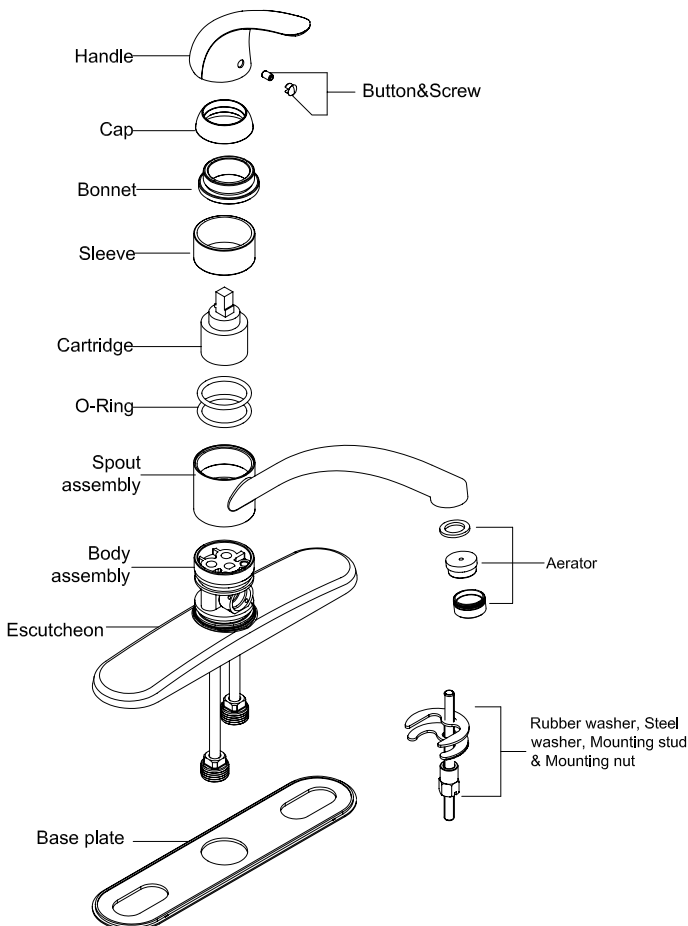
When installing your new faucet, first hand tighten the connector nuts, then use one wrench to anchor the fitting and a second wrench to tighten the nut one additional turn. Connections that are too tight will reduce the integrity of the system.

Wrap all threaded connections (except aerator thread in spout) with Teflon tape available from your local hardware or plumbing supply store. Always wrap in a counter-clockwise direction.

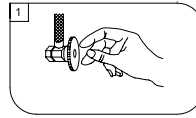
### SAFETY TIPS

**ALWAYS** protect your eyes with safety glasses

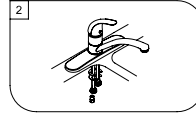
## EXPLODED DIAGRAM



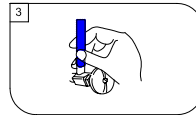
## INSTALLATION PROCEDURE



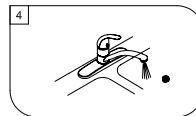
1. Shut off water supplies. Remove old faucet. Clean sink surface in preparation for new faucet.



2. Place new faucet in position on the sink. From under sink, install rubber washer, steel washer and nut onto mounting stud. Tighten with wrench.



3. Connect the water supply lines. Before connecting the supply lines with an adjustable wrench, apply Teflon tape or joint compound to the threads to help prevent leak.



4. Important: After installation is completed, remove aerator. Turn on water supply and allow both hot and cold water to run for at least one minute each. While water is running, check for leaks. Screw on aerator.

## TROUBLE SHOOTING

**Problem:** Faucet leaks from under handle.

**Cause:** Retainer nut is loose or o-ring on cartridge is dirty or twisted.

**Action:**

1. Move handle to OFF position. Remove the handle by unscrewing handle screw.
2. Tighten the retainer nut by turning it clockwise. Move the cartridge stem to the ON position. The leak should stop around the cartridge stem.
3. If the leak does not stop, shut off the water supply. Remove the retainer nut by turning it counter clockwise. Lift out the cartridge valve. Inspect the o-rings. Clear debris, untwist, or replace if necessary.
4. Replace the cartridge making sure the wings fit well into the cuts in the faucet body. Tightly screw the retainer nut onto the faucet body.
5. Reinstall the handle.

**Problem:** Water does not completely shut off.

**Cause:** Rubber valve seat is dirty, stuck or broken.

**Action:**

1. Determine which side (hot, cold or both) is leaking by shutting off the cold water supply first. If leaking persists, the problem is on the hot side. Shut off the hot water supply to determine if both sides have a problem.
2. Remove the handle on the problem side. Loosen the retainer nut and lift out the cartridge assembly.
3. Inspect the rubber valve seat in the faucet body. Remove any debris. If the rubber seat is stuck tightly in the water hole, push it gently with fingertip so that it moves up and down smoothly. The spring (with smaller end up) must be replaced underneath the valve seat. If the valve seat is worn or broken, replace it.
4. Replace the cartridge making sure the wings fit well into the cuts in the faucet body. Tightly screw the retainer nut onto the faucet body.
5. Reinstall the handle.

## MAINTENANCE

Your new Design House faucet is designed to give you years of trouble-free performance. Keep it looking new by cleaning it periodically with a soft cloth. Avoid abrasive cleaners, steel wool and harsh chemicals as these will dull the finish and void your warranty.

Brass finishes are polished, then protected with a lacquer coating to help prevent tarnishing. Clean these surfaces only with a damp, soft cloth.

### CONSUMER PROTECTION WARNING

Under the Safe Drinking Water Act, the U.S. Environmental Protection Agency restricts the amount of lead used in brass and solder. Your new faucet is made in strict compliance with all government standards. The materials used in the manufacture of this faucet are of industry standard quality and are similar to other plumbing products having brass fittings.

To reduce the amount of lead in your drinking water, allow the water to run for a moment before filling your glass and remember to always use cold water for drinking purposes.