



Design House is a registered brand of DHI Corp.
 Mequon, WI 53092
 1-800-558-8700

SINGLE HANDLE SHOWER ONLY FAUCET

Models 525931 525923 525915



Your new Design house faucet will give you years of trouble free performance. Thank you for choosing our product for your home. **Please read all of these instructions carefully before installing your new faucet.**

Helpful tools to install this faucet:

- .basin wrench
- .silicon sealer
- .Teflon tape
- .flashlight
- .wrenches
- .faucet supply tubes

IMPORTANT POINTS

When installing your new faucet, first hand tighten the connector nuts, then use one wrench to anchor the fitting and a second wrench to tighten the nut one additional turn. Connections that are too tight will reduce the integrity of the system.

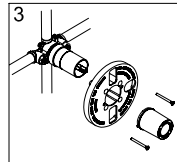
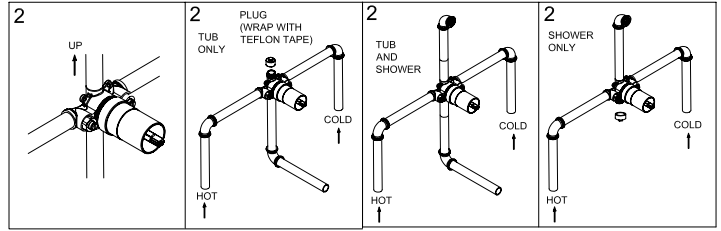
Wrap all threaded connections (except aerator thread in spout) with Teflon tape available from your local hardware or plumbing supply store. Always wrap in a counter-clockwise direction.

SAFETY TIPS

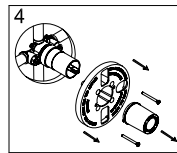
ALWAYS protect your eyes with safety glasses

INSTALLATION PROCEDURE

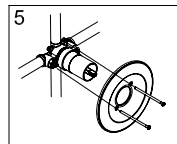
- Shut off main water supply.
- Connect water supply lines using 1/2" threaded pipes and 90 degree elbows. Wrap all threaded connections with Teflon tape or joint compound.
 Note: water limit screw stops are preset at the factory if they are present on valve. Modification is not required.



- Plaster guard and guard are preinstalled. the front surface of the plaster guard should sit flush with the finished surface of the wall.



- To remove the plaster guard, loosen and remove the 2 screws. Pull the guard straight out to remove. Discard before installing escutcheon. Trim sleeve will remain in place.

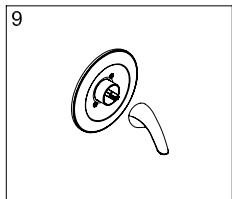
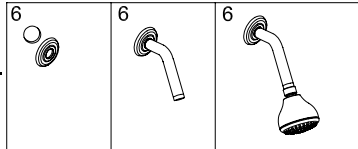


- With gasket in place, slide escutcheon over trim sleeve. Fasten escutcheon to faucet body and tighten to finished wall surface using two mounting screws.

INSTALLATION PROCEDURE

SHOWER HEAD INSTALLATION

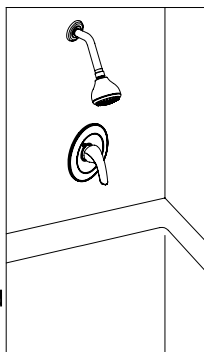
6. Insert shower arm through wall hole and thread to appropriate line. **REMEMBER TO WRAP THREADED CONNECTIONS WITH TEFLON TAPE OR JOINT COMPOUND.**



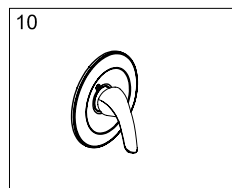
HANDLE INSTALLATION

- Slide handle onto square shaft.

10. Depending on model, secure handle with set screw and provided allen wrench OR place handle onto faucet body, insert screw through handle and thread to faucet body.

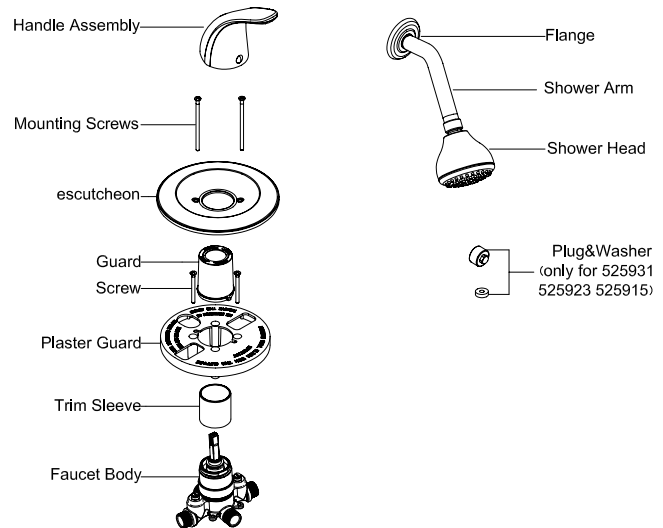


COMPLETED INSTALLATION



- Attach hot/cold indicator cover over set screw.

EXPLODED DIAGRAM



MAINTENANCE

Your new Design House faucet is designed to give you years of trouble-free performance. Keep it looking new by cleaning it periodically with a soft cloth. Avoid abrasive cleaners, steel wool and harsh chemicals as these will dull the finish and void your warranty.

Brass finishes are polished, then protected with a lacquer coating to help prevent tarnishing. Clean these surfaces only with a damp, soft cloth.

CONSUMER PROTECTION WARNING

Under the Safe Drinking Water Act, the U.S. Environmental Protection Agency restricts the amount of lead used in brass and solder. Your new faucet is made in strict compliance with all government standards. The materials used in the manufacture of this faucet are of industry standard quality and are similar to other plumbing products having brass fittings.

To reduce the amount of lead in your drinking water, allow the water to run for a moment before filling your glass and remember to always use cold water for drinking purposes.