



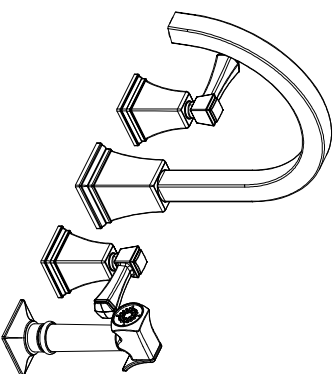
Design House is a registered brand of DHI Corp.

Mequon, WI 53092

1-800-558-8700

TORINO TWO HANDLE KITCHEN FAUCET

Models 522110

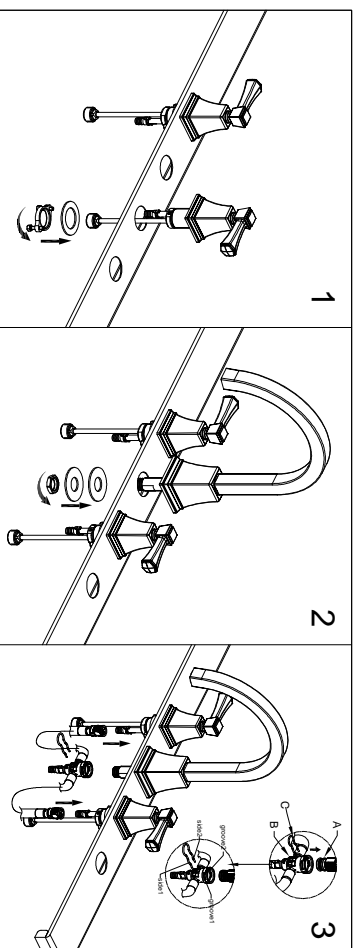


INSTALLATION PROCEDURE

1. Shut off water supplies. Remove old faucet. Insert the handle assembly in the proper position. Assemble metal washer, mounting nut and locking screw onto body underside of sink. Firmly tighten the locking screws to metal washer.

2. Place the spout assembly in position on sink. From under sink, secure firmly to sink with rubber washer, metal washer and nut.

3. Position the bodies as in illustration to install quick connects on hot and cold inlets. Carefully bend the hoses to fit available space. Push the T-tube(B) onto the end of the spout shank (A) until it seats. Then insert the clip(C) side 1 into groove 1 and its side 2 into groove 2. Push clip until it slides into place. Make sure clip is riding on grooves of T-tube not through it.



Your new Design House faucet will give you years of trouble free performance. Thank you for choosing our product for your home. **Please read all of these instructions carefully before installing your new faucet.**

Helpful tools to install this faucet:

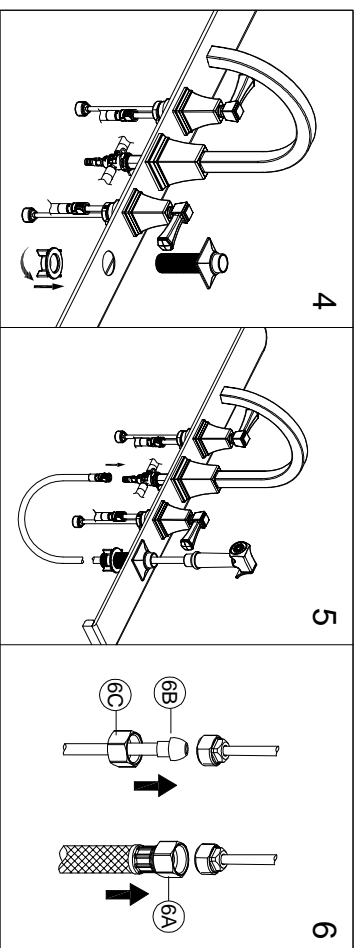
- basin wrench
- silicon sealer
- Teflon tape
- flashlight
- (2) crescent wrenches
- faucet supply tubes

IMPORTANT POINTS

- When installing your new faucet, hand tighten the connector nuts, then use one wrench to anchor the fitting and a second wrench to tighten the nut one additional turn. Connections that are too tight will reduce the integrity of the system.
- Wrap threaded connections (except aerator thread in spout or where o-ring or rubber sealant are present) with Teflon tape available from your local hardware or plumbing supply store. Always wrap in a clockwise direction.

SAFETY TIPS

- **ALWAYS** protect your eyes with safety glasses.

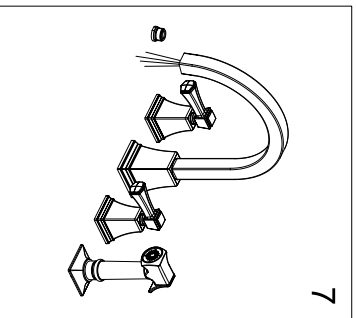


4. For models with spray: Mount spray support in far right hole in sink. Screw hold - down nut onto shank and hand tighten.

5. Insert spray hose down through the support and sink. Attach the spray hose to the connection beneath the faucet by aligning the tabs on quick connector. Push quick connect housing firmly upward and snap onto receiving tube tab. Pull down moderately to ensure connection has been made.

6. Make connections to water lines. Use 1/2" I.P.S. faucet connections (6A, not included) or use supplied coupling nuts (6C) with 3/8" O.D. ball-nose riser (6B, not included). Use wrenches to tighten connections. Do not overtighten.

INSTALLATION PROCEDURE



7. Important: After installation is completed, remove aerator. Turn on water supply and allow both hot and cold water to run for at least one minute each. While water is running, check for leaks. Replace aerator. Tighten nuts slightly to stop minor leaks.

TROUBLE SHOOTING

- o 522110 - Satin Nickel
- o 522128 - Brushed Bronze

Problem: Faucet leaks from under handle.

Cause: Bonnet is loose or o-ring on cartridge is dirty or twisted.

Action:

1. Move handle to OFF position. Remove cap and unscrew the screw on the handle. Then remove the entire handle assembly.
2. Tighten the bonnet by turning it clockwise. Move the cartridge stem to the ON position. The leak should stop around the cartridge stem.
3. If the leak does not stop, shut off the water supply. Remove the bonnet by turning it counter clockwise. Lift out the cartridge valve. Inspect the o-rings. Clear debris, untwist, or replace if necessary.
4. Replace the cartridge making sure the wings fit well into the cuts in the faucet body. Tighten screw
5. Reinstall the handle.

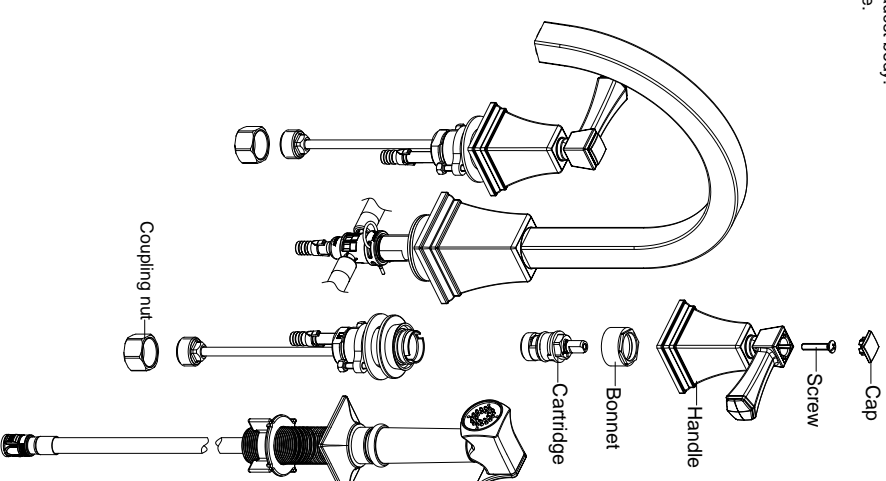
Problem: Faucet leaks around aerator or an improper flow pattern.

Cause: Aerator is incorrectly fitted or is dirty

Action:

1. Unscrew the aerator. Make sure all internal parts are laying flat.
2. If there is debris, gently flush all parts inside.
3. Reinstall aerator.

Many of these parts come preassembled. This exploded diagram is to assist in trouble shooting.



MAINTENANCE

Your new Design House faucet is designed to give you years of trouble free performance. Keep it looking new by cleaning it periodically with a soft cloth. Avoid abrasive cleaners, steel wool and harsh chemicals that will dull the finish and void your warranty.

Brass finishes are polished, then protected with a lacquer coating to help prevent tarnishing. Clean these surfaces only with a damp, soft cloth.

CONSUMER PROTECTION WARNING

Under the Safe Drinking Water Act, the U.S. Environmental Protection Agency restricts the amount of lead used in brass and solder. Your new faucet is made in strict compliance with all government standards. The materials used in the manufacture of this faucet are of industry standard quality and are similar to other plumbing products having brass fittings.

To reduce the amount of lead in your drinking water, allow the water to run for a moment before filling your glass and remember to always use cold water for drinking purposes.